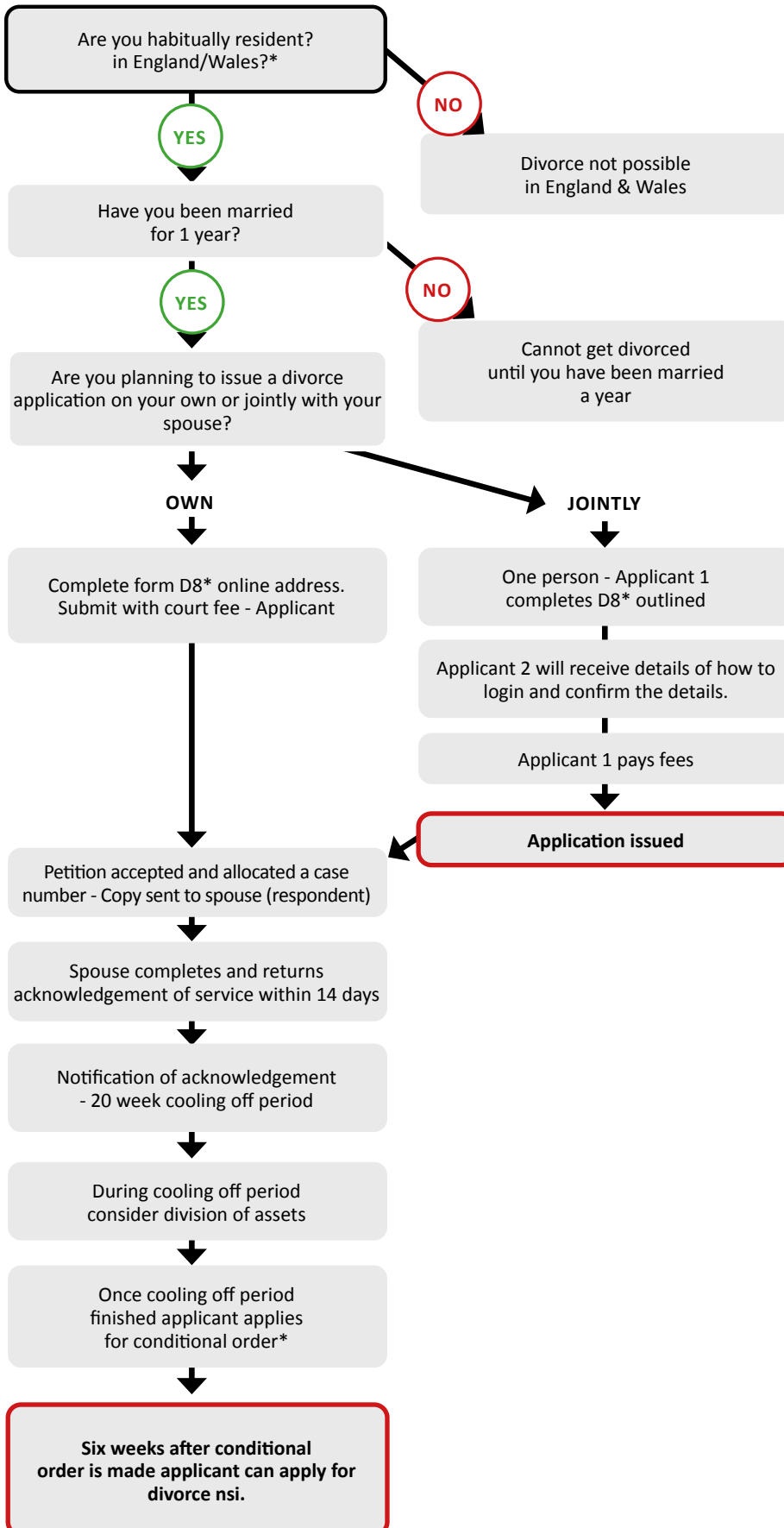


DIVORCE PROCESS FLOWCHART



*NOTES

Acknowledgement of service

This document confirms a spouse has received the divorce papers and states whether they'll contest the divorce. It's essential proof for the court that papers were served—without it, other service methods may be required.

Cooling-off period

In the UK, there's a mandatory 20-week reflection period after the divorce application is issued. It allows couples time to consider their decision and make arrangements. After 20 weeks, you can apply for a conditional order confirming the court accepts the divorce.

Divorce application (D8)

A divorce application ([D8 form](#)) is used to ask a court to end a marriage. In the UK, you can apply alone or jointly, without giving a specific reason other than that the marriage has irretrievably broken down. You'll need personal details, a marriage certificate, and a court fee.

Habitual resident

A habitual resident is someone living in a country, who is not a British Citizen, with the settled intention to stay for a reasonable (but not necessarily permanent) period. The single applicant in divorce proceedings must have been habitually resident in England and Wales for at least a year. This usually means living here with your main home, work, family, or school ties based here. Any concerns on this point please contact the helpline.

Petition

A divorce petition starts the legal process of ending a marriage. It includes details about the marriage, reasons for divorce, and any financial or child-related requests. The filer is the petitioner; the other spouse is the respondent.